

DEPARTMENT OF THE ARMY TECHNICAL BULLETIN

INSTALLATION OF BLOCKING AND TIEDOWN KIT  
S-250( )/G SHELTER ON  
M-561 TRUCK

Headquarters, Department of the Army, Washington DC  
2 October 1979

TB 11-2300-372-14, 11 July 1974, is changed as follows:

Page 1, table 1. Kit (FSN 5410-107-1864) Components: Add the following:  
Sling Assembly, NSN 3940-00-115-6380, Part No. SM-D-649952, Quantity 4.

By Order of the Secretary of the Army:

**E. C. MEYER**  
General, United States Army  
Chief of Staff

Official:

**J. C. PENNINGTON**  
Major General, United States Army  
The Adjutant General

Distribution:

*Active Army*

HISA (Ft Monmouth) (21)  
USAINSCOM (2)  
COE (1)  
TSG (1)  
USAARENBD (1)  
DARCOM (1)  
TRADOC (2)  
OS Maj Comd (4)  
TECOM (2)  
USACC (4)  
MDW (1)  
Armies (2)  
Corps (2)  
Svc Colleges (1)  
USASIGS (5)  
USAADS (2)  
USAFAS (2)  
USAARMS (2)  
USAIS (2)  
USAES (2)  
USAICS (3)  
MAAG (1)  
USARMIS (1)  
USAERDAA (1)

USAERDAW (1)  
Fort Gordon (10)  
Fort Carson (5)  
Army Dep (1) except:  
LBAD (14)  
SAAD (30)  
TOAD (14)  
SHAD (3)  
Fort Gillem (10)  
USA Dep (1)  
Sig Sec USA Dep (1)  
Fort Richardson (CERCOM Ofc) (2)  
Units org under fol TOE:  
(1 copy each unit)  
11-97  
11-98  
11-117  
11-127  
11-225  
11-227  
11-500(AA-AC)  
(2 copies each unit)  
29-207  
29-610

This copy is a reprint which includes current pages from Change 1.

NG & USAR: None.

For explanation of abbreviations used, see AR 310-50.

DEPARTMENT OF THE ARMY TECHNICAL BULLETIN

INSTALLATION OF BLOCKING AND TIEDOWN KIT  
FOR S-250( )G SHELTER ON  
M-561 TRUCK

Headquarters, Department of the Army, Washington, DC  
11 July 1974

	<i>Paragraph</i>
Purpose .....	1
Reporting of technical bulletin improvements.....	2
Kit component.....	3
Secure the shelter on the truck.....	4

**1. Purpose.** This technical bulletin provides installation instructions for the blocking and tiedown kit that secures the S250( )G Shelter on the M-561 Truck.

**NOTE**

Type designation including ( ) indicates all models of the equipment. Certain end item configurations that exceed the basic S-250 envelope may be inconsistent with the ability of this kit to mate the configured shelter to the truck

**2. Reporting of Technical Bulletin Improvements.**  
The reporting of errors, omissions, and recommendations for improving this bulletin by the individual user is

encouraged. Reports should be submitted on DA Form 2028 (Recommended Changes to Publications and Blank Forms) and forwarded direct to Commander, ECOM, ATTN: AMSEL-MA-S, Fort Monmouth, NJ 07703.

**3. Kit Components.** Table 1 lists the materials used for the shelter installation.

**NOTE**

After each installation and initial use, check each blocking and tiedown member for slack and looseness. Tighten and secure as required; periodically check for slack and looseness.

*Table 1. Kit (FSN 5410-107-1864) Components*

Description	Part Number	Quantity
Spacer Assembly.....	SC-C-595090.....	2
Bracket Assembly.....	SC-B-781181.....	4
FSN 5410-107-1867 Installation Instructions .....	TB 11-2300-372-14.....	1

**4. Secure the Shelter on the Truck.** a. Place the S-250( )/G Shelter on the M-561 Truck cargo bed in accordance with the handling requirements in TB 750-240, Section V and observe the warnings and precautions.

b. Remove the two plugs protecting the threaded holes at the front end of the cargo body and store in the shelter. Remove the two rings from the threaded holes at the tailgate end of the cargo body and store in the shelter or in the hooks of the sling legs as

per *d* below. Install a bracket assembly (fig. 2A) in each of the four threaded holes.

c. Place the two spacer assemblies (fig. 1), plate tabs up, on the cargo bed with the short end at the rear so that the skids are placed between the plate tabs (fig. 2A). Position the shelter parallel to and equally spaced from the cargo body sides of the truck. The shelter should be equally spaced, front to back, but may be slightly forward to insure tailgate closing.

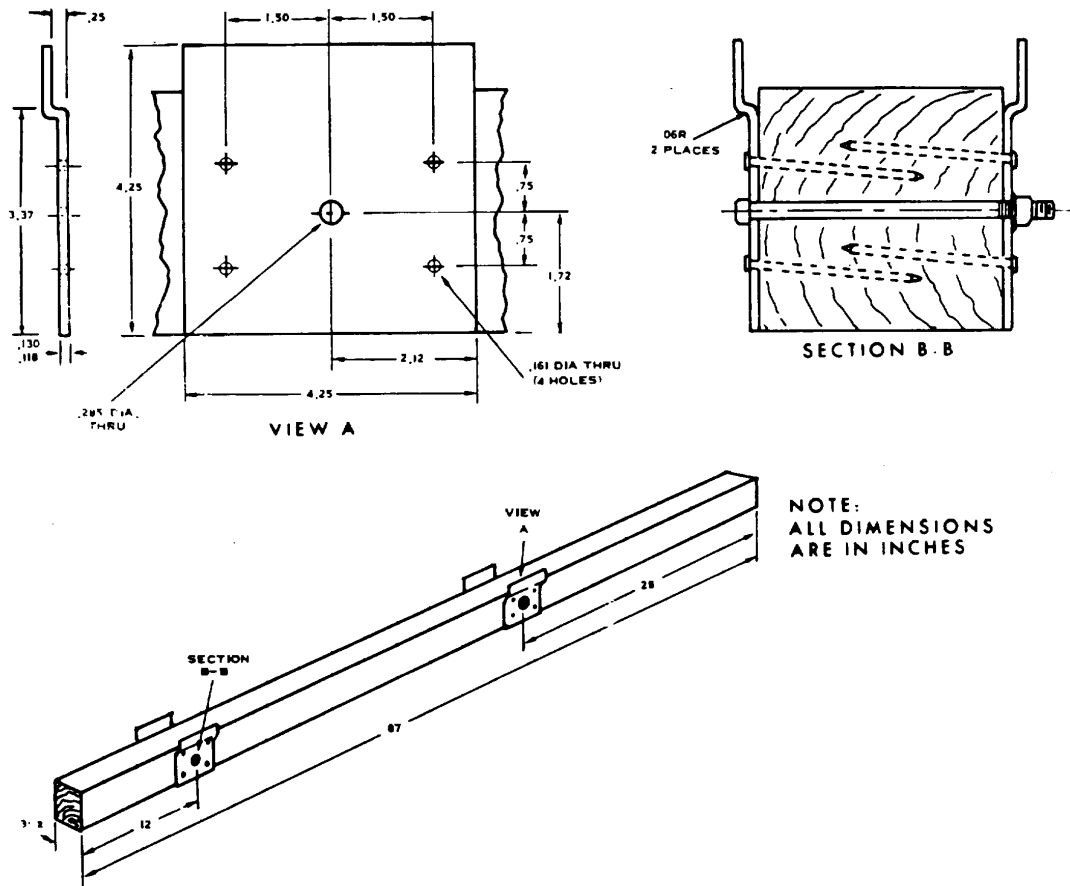


Figure 1. Spacer assembly.

d. Unhook the four free sling legs from the sling assembly supplied with the shelter. Store the ring section in the shelter. Engage the hooks, turn buckle end of the sling legs to the shelter lifting rings, keeper facing outward (fig. 2B). The two rings removed from the tailgate end may be snapped into

the rear hooks at the lifting rings instead of storing them in the shelter.

e. At each sling leg, open the turnbuckle. Remove the bracket assembly pin, lock, and then the pin straight, headed. Position the bracket flanges parallel to the cargo body sides. Holding the hook in the

vee of the eye away from the ends of the shelter, place the eye between the flanges of the bracket and replace the pin, straight, headed (head facing outward) and the pin, lock (fig. 2A). Tighten the turnbuckles. When the turnbuckles are all tight, secure the locking nuts.

f. The completed shelter' tiedown is shown in figure 2C.

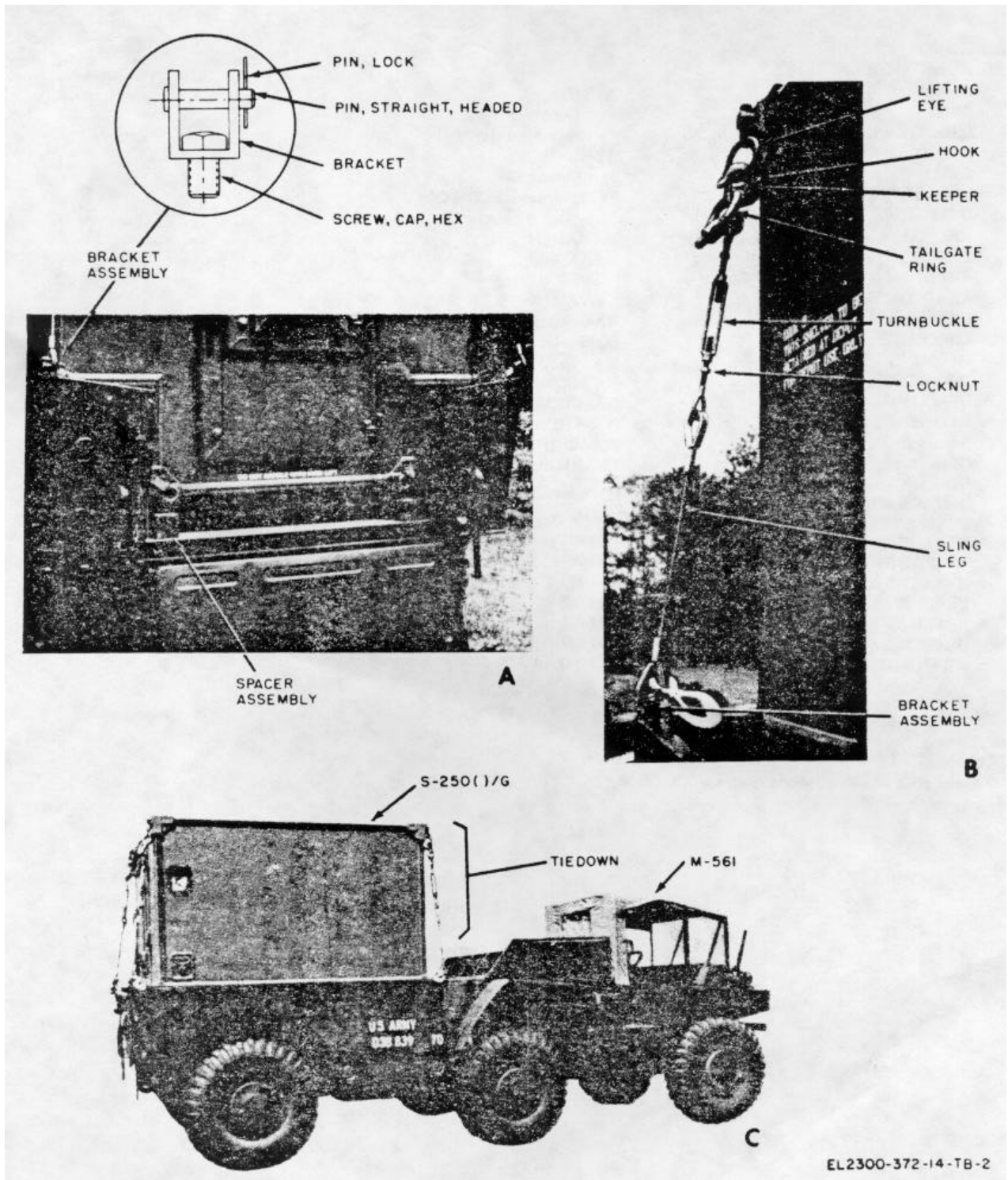


Figure 2. Shelter tiedown, detail.

By Order of the Secretary of the Army:

CREIGHTON W. ABRAMS  
General, United States Army  
Chief of Staff

Official:

VERNE L. BOWERS  
Major General, United States Army  
The Adjutant General

Distribution:

*Active Army:*

USASA ( )	ATS (1)
CNGB (1)	Fort Gordon (10)
Dir of Trars (1)	Fort Huachuca (10)
COE (1)	WSMR (1)
TSG (1)	Fort Carson (5)
USAARENBD (1)	Ft Richardson (ECOM Ofc) (2)
USAMB (10)	Army Dep (1) except
AMC (1)	LBAD (14)
TRADOC (2)	SAD (0)
ARADCOM(2)	TOAD (14)
ARADCOM Rgn (2)	ATAD (10)
OS Maj Comd (4)	USA Dep (2)
LOGCOMDS (3)	Sig Sec USA Dep 2)
MICOM (2)	Sig Dep (2)
TECOM (2)	Six FLDMS (1)
USACC( 4)	USAERDAA (1)
MDW (1)	USAERDAW (1)
Armies (2)	MAAG (1)
Corps (2)	USARMIS (1)
HISA (Ft Monmouth) (18)	Units org under fol TOE
Svc Colleges	(1 copy each unit):
USASESS ( )	
USAADS (2)	11-97
USAFAS (2)	11-98
USAARMS 2)	11-117
USAIS (2)	11-127
USAES (2)	11-225
USAINTCS (3)	11-227
WRAMC (1)	11-500(AA-AC)

NG: None

USAR: None.

For explanation of abbreviations used, see AR 310-50.

☆U.S. GOVERNMENT PRINTING OFFICE: 1989 - 242-451/05368

RECOMMENDED CHANGES TO EQUIPMENT TECHNICAL PUBLICATIONS



THEN... JOT DOWN THE DOPE ABOUT IT ON THIS FORM, CAREFULLY TEAR IT OUT, FOLD IT AND DROP IT IN THE MAIL!

SOMETHING WRONG WITH THIS PUBLICATION?

FROM: (PRINT YOUR UNIT'S COMPLETE ADDRESS)

DATE SENT

PUBLICATION NUMBER

PUBLICATION DATE

PUBLICATION TITLE

BE EXACT... PIN-POINT WHERE IT IS

PAGE NO.

PARA-GRAPH

FIGURE NO.

TABLE NO.

IN THIS SPACE TELL WHAT IS WRONG AND WHAT SHOULD BE DONE ABOUT IT:

TEAR ALONG PERFORATED LINE

PRINTED NAME, GRADE OR TITLE, AND TELEPHONE NUMBER

SIGN HERE:

DA FORM 2028-2  
1 JUL 79

PREVIOUS EDITIONS ARE OBSOLETE.

P.S.—IF YOUR OUTFIT WANTS TO KNOW ABOUT YOUR RECOMMENDATION MAKE A CARBON COPY OF THIS AND GIVE IT TO YOUR HEADQUARTERS.

